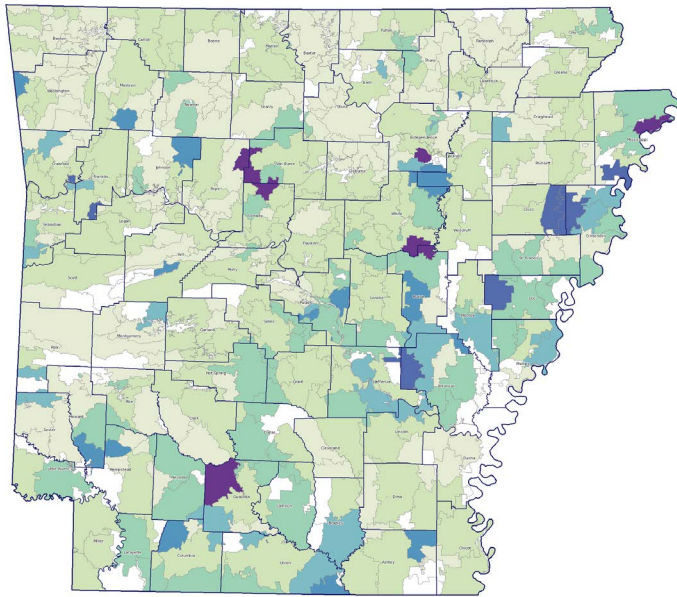


# Arkansas

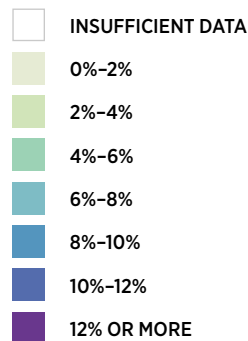
## Seriously Delinquent Mortgages by ZIP Code

JUNE 2017

Please note that the Housing Market Conditions heat maps have been upgraded and now display the percentage categories of “seriously delinquent mortgages” and “change in seriously delinquent mortgages” in an updated color palette. If you have any questions, or need more information about the new heat maps, please contact [communitydevelopment@stls.frb.org](mailto:communitydevelopment@stls.frb.org).



In June 2017, 2.66 percent of loans in Arkansas were seriously delinquent (delinquent 90 days or more or in foreclosure). The national rate stood at 2.28 percent.

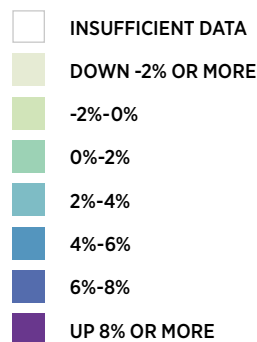
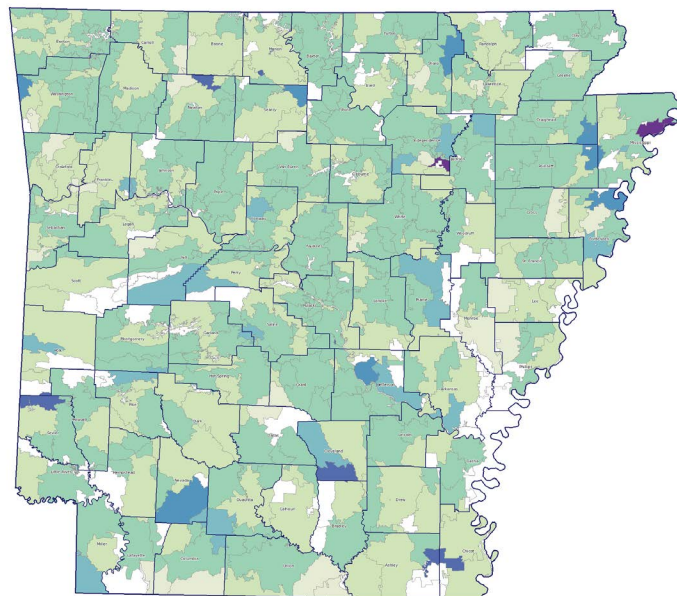


Source: Black Knight Financial Services McDash™ Database

## Change in Seriously Delinquent Mortgages by ZIP Code

MARCH 2017 TO JUNE 2017

The share of seriously delinquent loans decreased 18 basis points (bps) in Arkansas between March 2017 and June 2017. Loans that are delinquent 90 days or more decreased 7 bps; foreclosures decreased 11 bps.



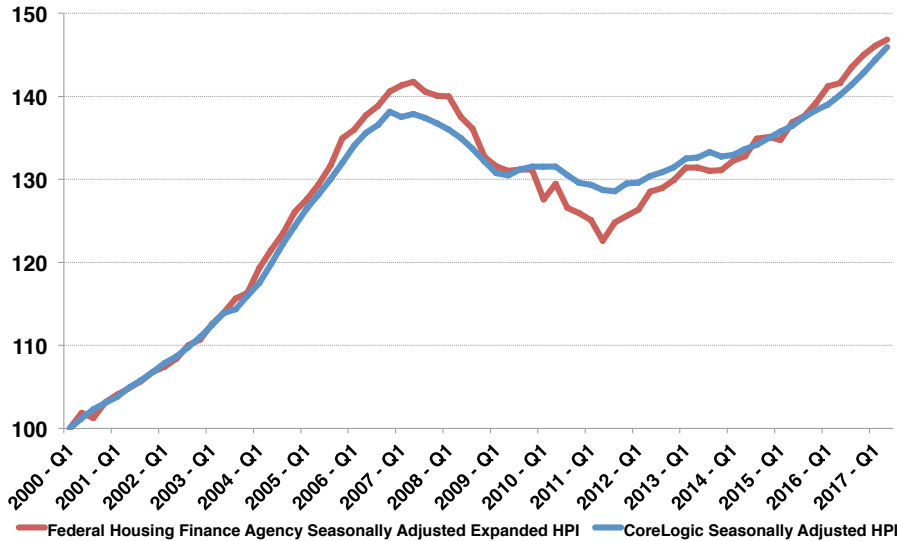
Source: Black Knight Financial Services McDash™ Database

# Arkansas

## House Prices

SECOND QUARTER 2017

**Arkansas House Prices**  
Indexed: Q1 2000 = 100



In the second quarter of 2017, house price indices for Arkansas were 0.5 percent higher (FHFA) and 1.0 percent higher (CoreLogic) than in the first quarter of 2017. Since the second quarter of 2016, house price indices were 3.7 percent higher (FHFA) and 4.1 percent higher (CoreLogic).

Sources: Federal Housing Finance Agency and CoreLogic