

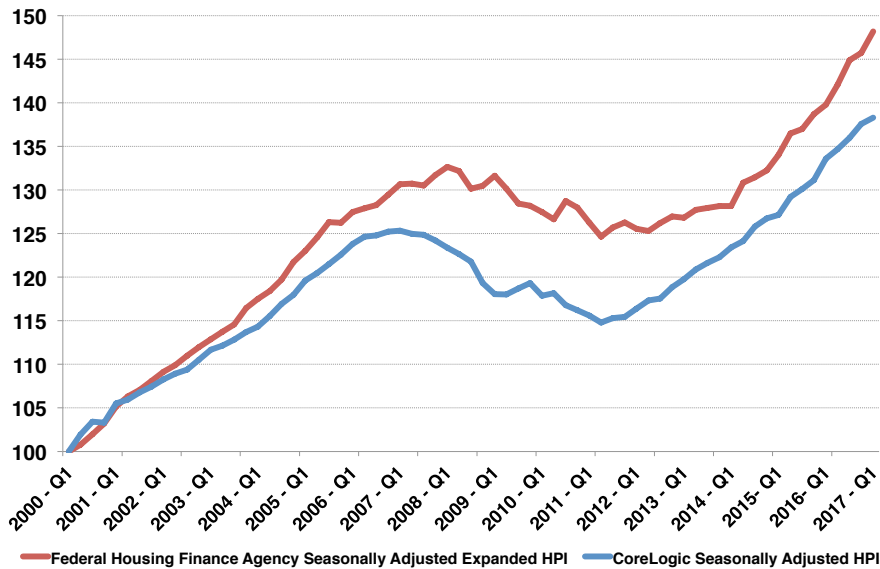


# Louisville MSA

## House Prices

FIRST QUARTER 2017

**Louisville, Ky MSA House Prices**  
Indexed: Q1 2000 = 100



In the first quarter of 2017, house price indices for the Louisville MSA were 1.7 percent higher (FHFA) and 0.5 percent higher (CoreLogic) than in the fourth quarter of 2016. Since the first quarter of 2016, house price indices were 6.0 percent higher (FHFA) and 3.5 percent higher (CoreLogic).

Sources: Federal Housing Finance Agency and CoreLogic