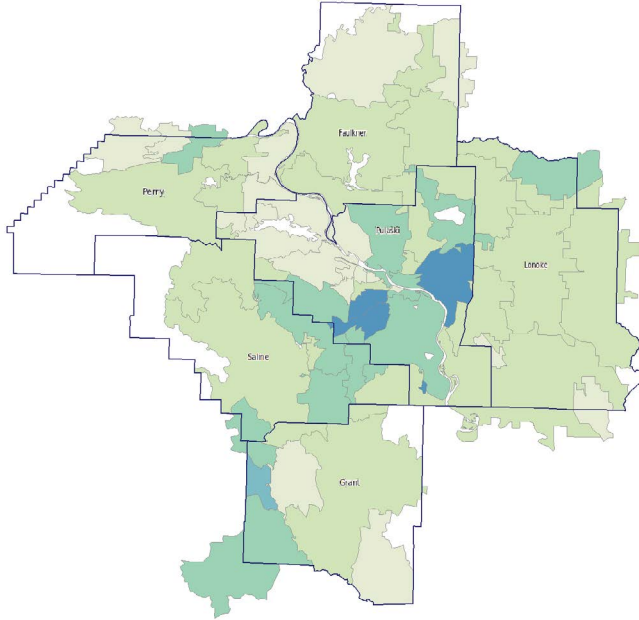


# Little Rock MSA

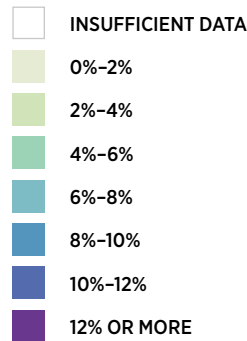
## Seriously Delinquent Mortgages by ZIP Code

DECEMBER 2017

Please note that the Housing Market Conditions heat maps have been upgraded and now display the percentage categories of “seriously delinquent mortgages” and “change in seriously delinquent mortgages” in an updated color palette. If you have any questions, or need more information about the new heat maps, please contact [communitydevelopment@stls.frb.org](mailto:communitydevelopment@stls.frb.org).



In December 2017, 3.29 percent of loans in the Little Rock MSA were seriously delinquent (delinquent 90 days or more or in foreclosure). The national rate stood at 2.59 percent.

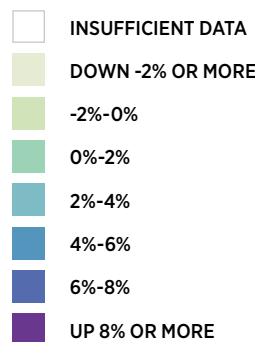
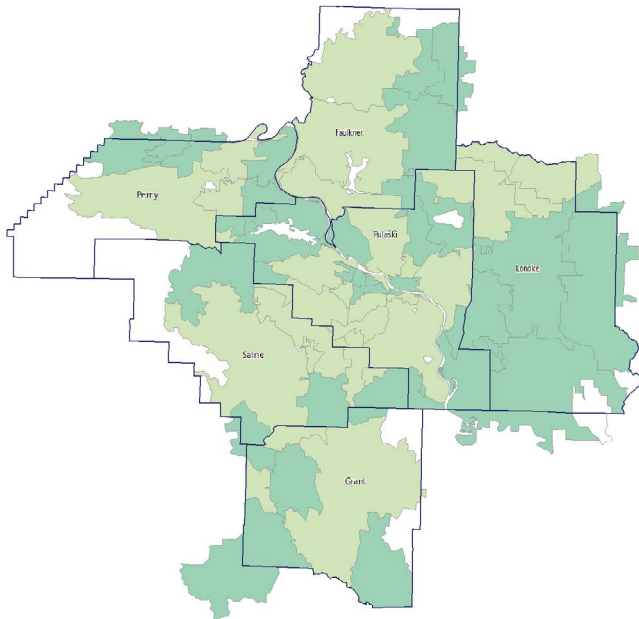


Source: Black Knight Financial Services McDash™ Database

## Change in Seriously Delinquent Mortgages by ZIP Code

SEPTEMBER 2017 TO DECEMBER 2017

The share of seriously delinquent loans increased 14 basis points (bps) in the Little Rock MSA between September 2017 and December 2017. Loans that are delinquent 90 days or more increased 8 bps; foreclosures increased 6 bps.



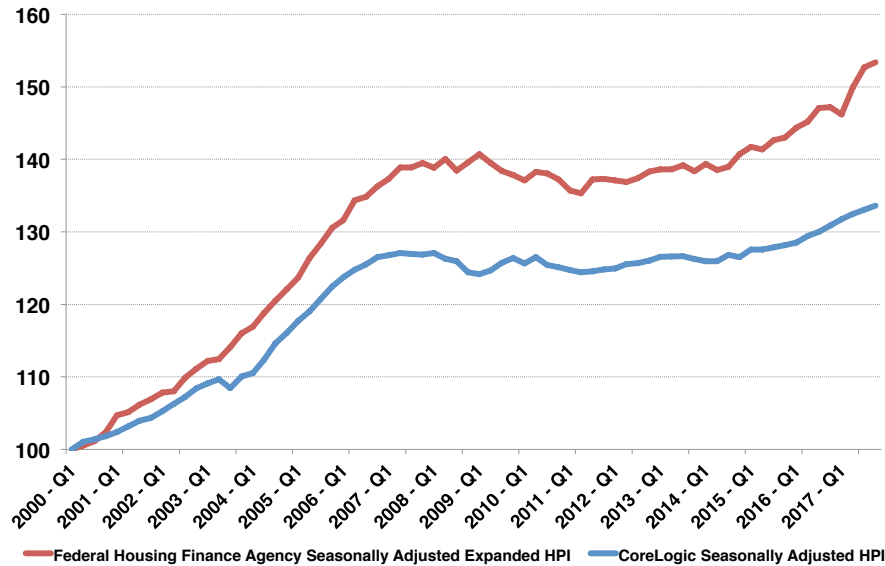
Source: Black Knight Financial Services McDash™ Database

# Little Rock MSA

## House Prices

FOURTH QUARTER 2017

**Little Rock MSA House Prices**  
Indexed: Q1 2000 = 100



In the fourth quarter of 2017, house price indices for the Little Rock MSA were 0.5 percent higher (FHFA) and 0.4 percent higher (CoreLogic) than in the third quarter of 2017. Since the fourth quarter of 2016, house price indices were 4.2 percent higher (FHFA) and 2.1 percent higher (CoreLogic).

Sources: Federal Housing Finance Agency and CoreLogic