

# District Data

Selected economic indicators of banking,  
agricultural and business conditions in  
the Eighth Federal Reserve District

Regional Economist  
January 1995

## Commercial Bank Performance Ratios

U.S., District and State

	All U.S.	U.S. <\$15B <sup>1</sup>	District	AR	IL	IN	KY	MS	MO	TN
<b>Return on Average Assets (Annualized)</b>										
3rd quarter 1994	1.18%	1.31%	1.26%	1.32%	1.24%	1.10%	1.14%	1.27%	1.31%	1.34%
2nd quarter 1994	1.16	1.28	1.26	1.32	1.24	1.10	1.26	1.24	1.25	1.33
3rd quarter 1993	1.22	1.26	1.27	1.41	1.44	1.20	1.10	1.38	1.21	1.32
<b>Return on Average Equity (Annualized)</b>										
3rd quarter 1994	15.00%	15.24%	14.66%	14.37%	12.88%	11.82%	13.10%	13.73%	16.52%	16.98%
2nd quarter 1994	14.79	14.90	14.69	14.44	12.81	11.72	14.41	13.48	15.77	17.00
3rd quarter 1993	15.79	15.11	14.99	15.63	15.27	12.83	12.98	15.09	15.27	17.29
<b>Net Interest Margin (Annualized)</b>										
3rd quarter 1994	4.33%	4.58%	4.20%	4.12%	4.15%	4.15%	4.25%	4.59%	4.12%	4.27%
2nd quarter 1994	4.19	4.40	4.03	3.96	3.99	4.00	4.11	4.40	3.90	4.19
3rd quarter 1993	4.50	4.85	4.53	4.55	4.89	4.47	4.33	4.97	4.38	4.66
<b>Nonperforming Loans<sup>2</sup> ÷ Total Loans</b>										
3rd quarter 1994	1.45%	1.27%	0.74%	0.69%	1.03%	0.58%	0.87%	0.66%	0.65%	0.65%
2nd quarter 1994	1.61	1.36	0.78	0.77	1.00	0.58	0.84	0.78	0.72	0.70
3rd quarter 1993	2.39	1.89	0.99	0.91	1.24	0.61	1.04	0.86	0.97	1.05
<b>Net Loan Losses ÷ Average Total Loans (Annualized)</b>										
3rd quarter 1994	0.47%	0.43%	0.18%	0.10%	0.27%	0.12%	0.23%	0.25%	0.11%	0.28%
2nd quarter 1994	0.51	0.45	0.17	0.10	0.28	0.12	0.23	0.11	0.07	0.33
3rd quarter 1993	0.80	0.70	0.35	0.12	0.39	0.16	0.45	0.35	0.35	0.47
<b>Loan Loss Reserve ÷ Total Loans</b>										
3rd quarter 1994	2.28%	2.05%	1.71%	1.46%	1.68%	1.48%	1.73%	1.67%	1.87%	1.72%
2nd quarter 1994	2.34	2.12	1.74	1.52	1.74	1.49	1.68	1.78	1.92	1.79
3rd quarter 1993	2.54	2.29	1.80	1.58	1.83	1.49	1.70	1.69	1.95	2.04

NOTE: Data include only that portion of the state within Eighth District boundaries.

<sup>1</sup> U.S. banks with average assets of less than \$15 billion are shown separately to make comparisons with District banks more meaningful, as there are no District banks with average assets greater than \$15 billion.

<sup>2</sup> Includes loans 90 days or more past due and nonaccrual loans

SOURCE: FFIEC Reports of Condition and Income for Insured Commercial Banks



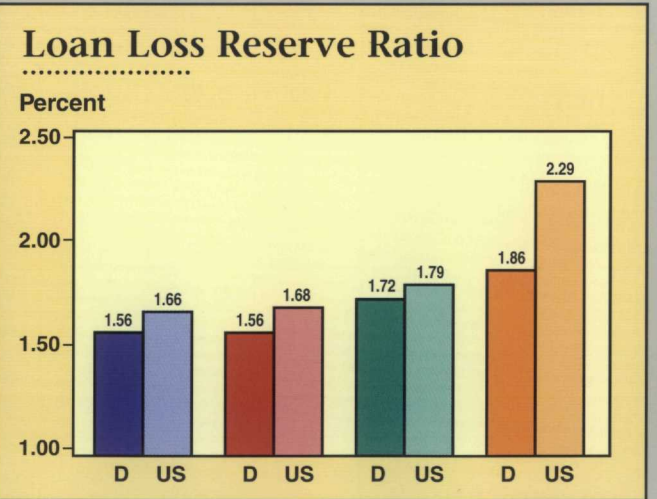
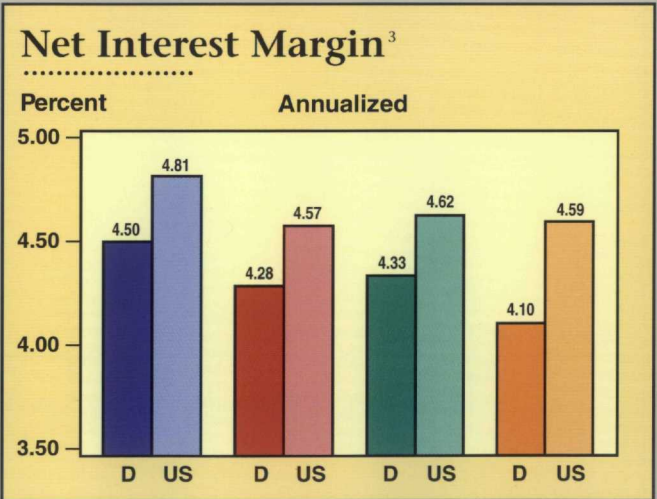
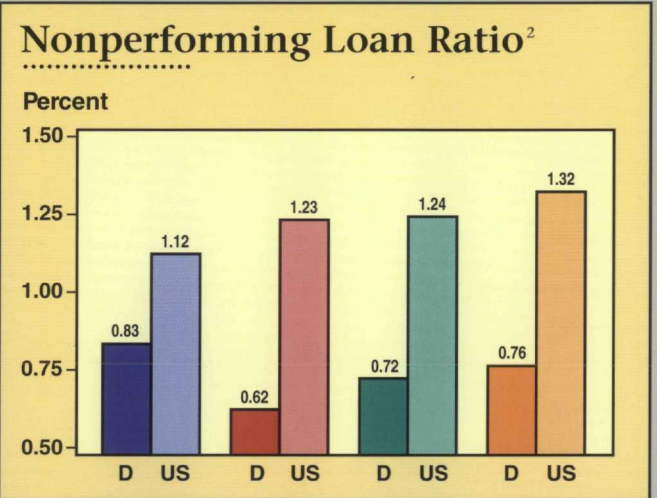
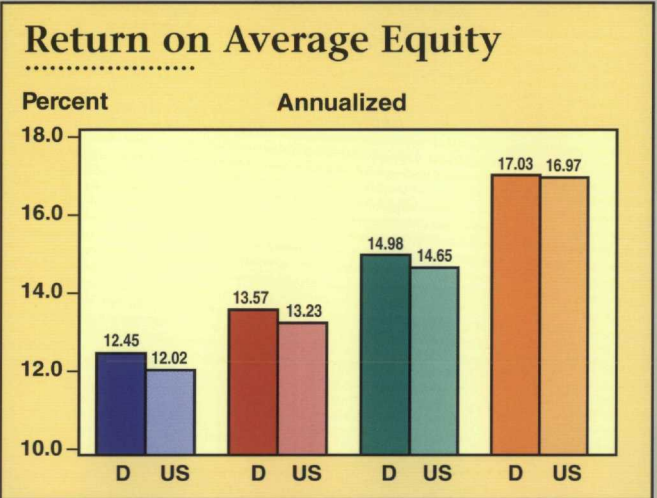
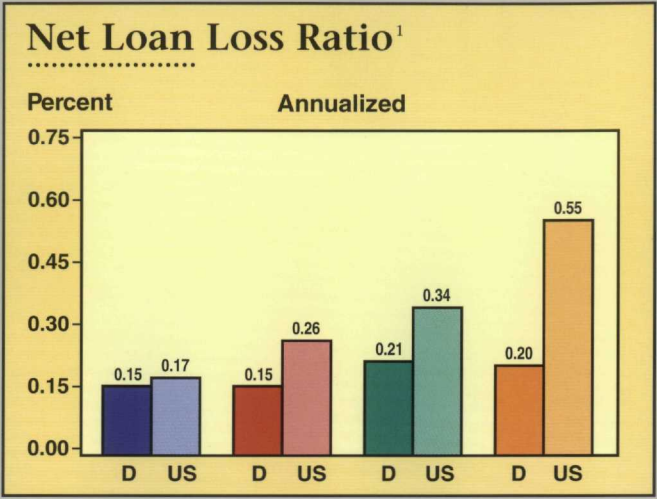
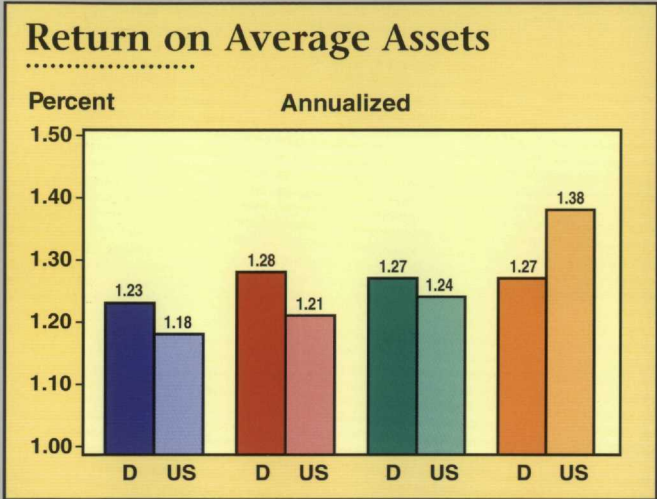
# Commercial Bank Performance Ratios

by Asset Size

3rd Quarter 1994

Earnings

Asset Quality



D = District

US = United States

< \$100 Million	\$300 Million - \$1 Billion
\$100 Million - \$300 Million	\$1 Billion - \$15 Billion

NOTE: Asset quality ratios are calculated as a percent of total loans.

<sup>1</sup> Loan losses are adjusted for recoveries

<sup>2</sup> Includes loans 90 days or more past due and nonaccrual loans

<sup>3</sup> Interest income less interest expense as a percent of average earning assets

SOURCE: FFIEC Reports of Condition and Income for Insured Commercial Banks



Agricultural Bank Performance Ratios

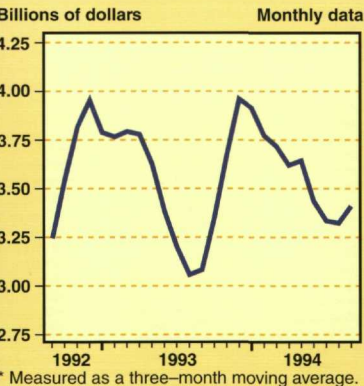
	U.S.	AR	IL	IN	KY	MS	MO	TN
Return on average assets (annualized)								
3rd quarter 1994	1.26%	1.24%	1.20%	1.16%	1.40%	1.52%	1.32%	1.21%
2nd quarter 1994	1.25	1.24	1.19	1.14	1.34	1.48	1.33	1.23
3rd quarter 1993	1.35	1.36	1.30	1.25	1.34	1.63	1.43	1.22
Return on average equity (annualized)								
3rd quarter 1994	12.49%	11.84%	11.57%	11.29%	14.23%	15.42%	13.21%	12.63%
2nd quarter 1994	12.45	11.86	11.48	11.17	13.63	14.28	13.38	12.15
3rd quarter 1993	13.62	13.11	12.67	12.82	13.97	16.41	14.67	12.50
Net interest margin (annualized)								
3rd quarter 1994	4.29%	4.05%	3.91%	4.38%	4.31%	4.70%	4.28%	4.21%
2nd quarter 1994	4.09	3.86	3.70	4.24	4.12	4.58	4.10	3.89
3rd quarter 1993	4.62	4.41	4.23	4.79	4.48	5.20	4.63	4.65
Ag loan losses ÷ average ag loans (annualized)								
3rd quarter 1994	0.12%	0.37%	-0.06%	-0.12%	0.02%	0.21%	0.16%	0.26%
2nd quarter 1994	0.09	0.60	-0.04	-0.04	0.01	0.18	0.21	-0.02
3rd quarter 1993	0.15	0.41	0.13	0.46	0.15	0.79	0.36	-0.06
Ag nonperforming loans <sup>1</sup> ÷ total ag loans								
3rd quarter 1994	1.23%	0.63%	1.17%	1.40%	1.49%	1.69%	0.91%	0.14%
2nd quarter 1994	1.31	0.93	1.33	1.35	2.03	3.07	0.91	0.28
3rd quarter 1993	1.54	0.74	1.98	1.36	1.44	2.44	1.02	0.11

NOTE: Agricultural banks are defined as those banks with a greater than average share of agricultural loans to total loans.  
Data include only that portion of the state within Eighth District boundaries.

<sup>1</sup> Includes loans 90 days or more past due and nonaccrual loans

SOURCE: FFIEC Reports of Condition and Income for Insured Commercial Banks

U.S. Agricultural Exports\*



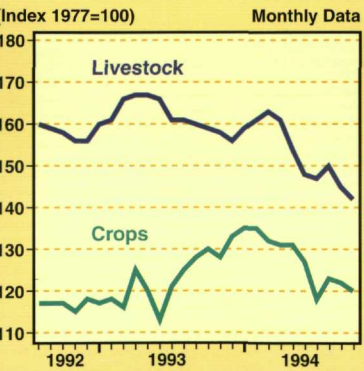
U.S. Agricultural Exports by Commodity

Dollar amounts in billions

Commodity	July	Aug	Sept	Year-to-date	Change from year ago
Livestock & products	.67	.75	.78	8.33	41.2%
Corn	.26	.30	.30	3.82	-10.2
Cotton	.22	.19	.12	2.31	50.0
Rice	.09	.04	.05	.89	16.0
Soybeans	.12	.27	.26	4.16	-9.7
Tobacco	.06	.07	.06	1.26	-12.7
Wheat	.24	.33	.39	4.03	-15.0
TOTAL <sup>1</sup>	3.15	3.51	3.56	43.51	2.2

<sup>1</sup> Includes commodities not listed here

U.S. Crop and Livestock Prices



Indexes of Food and Agricultural Prices

	Level			Growth <sup>1</sup>	
	III/94	II/94	III/93	II/94-III/94	III/93-III/94
Prices received by U.S. farmers	135	142	143	-19.1	-6.0
Prices received by District farmers <sup>2</sup>					
Arkansas	126	135	123	-24.2	2.2
Illinois <sup>3</sup>	90	104	102	-43.1	-11.7
Indiana	104	119	114	-40.9	-8.2
Missouri	135	137	145	-5.7	-6.7
Tennessee	136	146	145	-24.8	-6.4
Prices paid by U.S. farmers					
Production items	181	184	179	-6.4	1.1
Other items <sup>4</sup>	199	200	195	-2.0	2.1
Consumer food prices	145	143	141	4.8	2.8
Consumer nonfood prices	150	148	145	3.5	2.9

NOTE: Data not seasonally adjusted except for consumer food prices and nonfood prices.

<sup>1</sup> Compounded annual rates of change are computed from unrounded data.

<sup>2</sup> Index of prices received for all farm products (1977=100). Indexes for Kentucky and Mississippi are unavailable.

<sup>3</sup> (1987-91=100) for 1993; (1988-92=100) for 1994

<sup>4</sup> Other items include commodities, services, interest, taxes and wages.

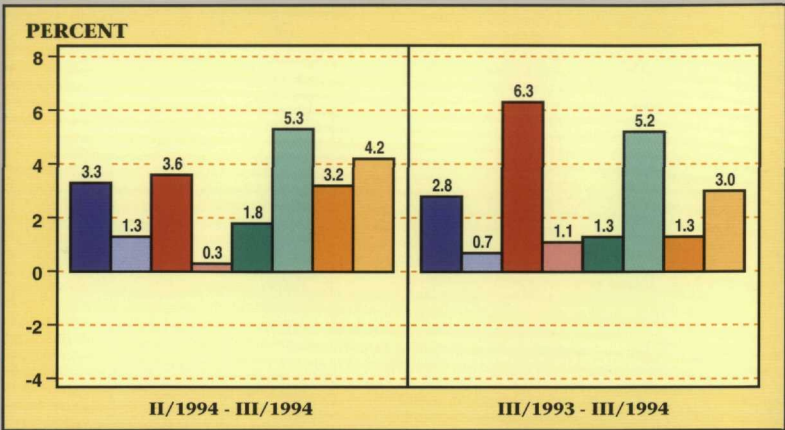


# Selected U.S. and State Business Indicators

## United States

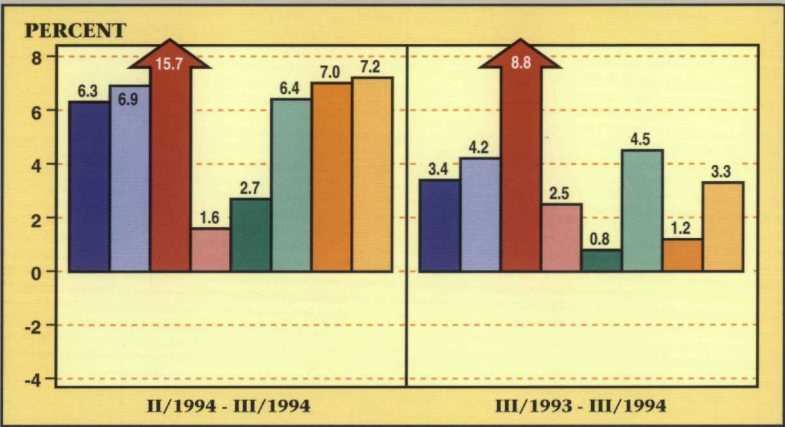
	III/1994	II/1994	III/1993
Labor force (in thousands)	130,996	130,590	128,181
Total nonagricultural employment (in thousands)	113,908	112,995	110,755
Unemployment rate	6.0%	6.1%	6.7%
	II/1994	I/1994	II/1993
Real personal income* (in billions)	\$3,821.6	\$3,776.6	\$3,709.0

Compounded Annual Rates of Change in  
Nonagricultural Employment



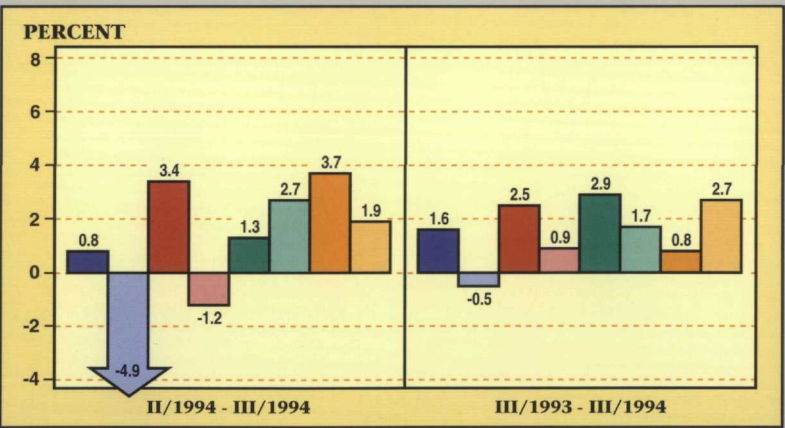
## Arkansas

	III/1994	II/1994	III/1993
Labor force (in thousands)	1,213.4	1,206.9	1,164.3
Total nonagricultural employment (in thousands)	1,026.6	1,011.0	992.6
Unemployment rate	5.4%	5.5%	6.1%
	II/1994	I/1994	II/1993
Real personal income* (in billions)	\$27.6	\$27.6	\$26.8



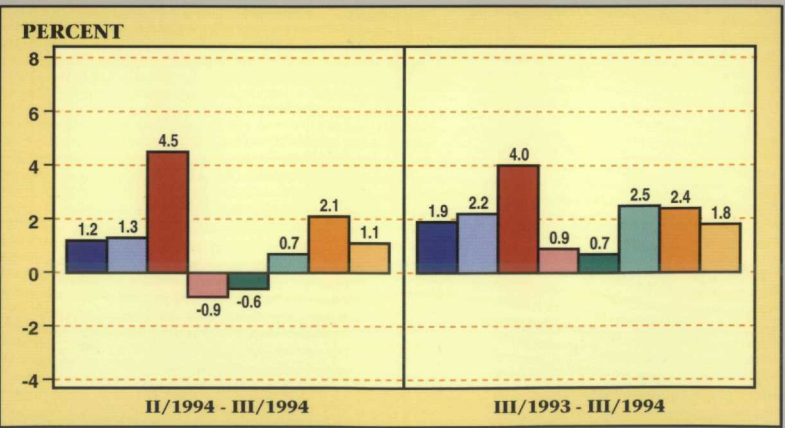
## Illinois

	III/1994	II/1994	III/1993
Labor force (in thousands)	5,947.4	6,089.2	5,980.6
Total nonagricultural employment (in thousands)	5,403.3	5,391.9	5,316.5
Unemployment rate	5.8%	5.5%	7.8%
	II/1994	I/1994	II/1993
Real personal income* (in billions)	\$187.5	\$185.8	\$182.3



## Indiana

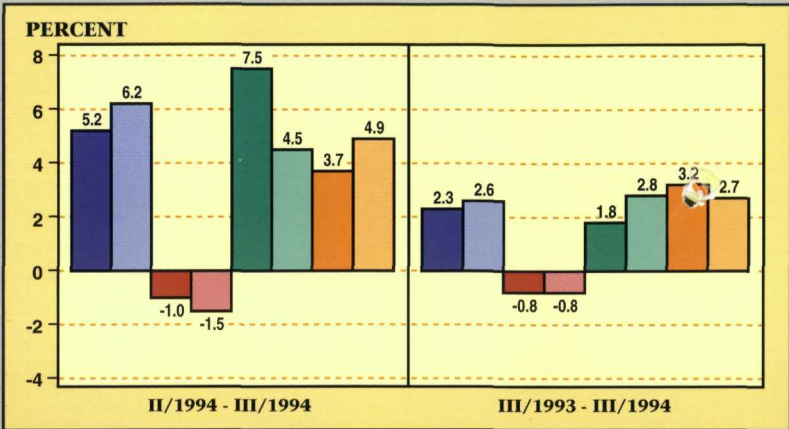
	III/1994	II/1994	III/1993
Labor force (in thousands)	2,991.7	3,008.6	2,953.4
Total nonagricultural employment (in thousands)	2,640.6	2,632.8	2,590.4
Unemployment rate	5.0%	4.8%	5.1%
	II/1994	I/1994	II/1993
Real personal income* (in billions)	\$78.4	\$77.6	\$75.6





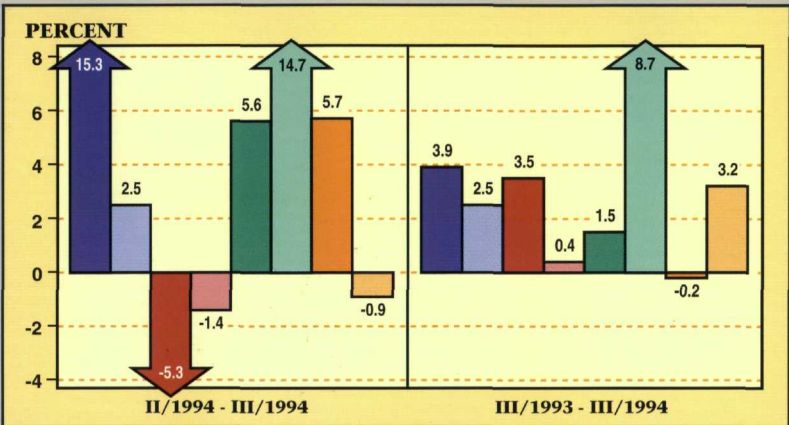
## Kentucky

	III/1994	II/1994	III/1993
Labor force (in thousands)	1,821.0	1,794.7	1,795.4
Total nonagricultural employment (in thousands)	1,570.4	1,550.5	1,534.7
Unemployment rate	5.1%	4.8%	6.2%
	II/1994	I/1994	II/1993
Real personal income* (in billions)	\$45.9	\$45.3	\$44.4



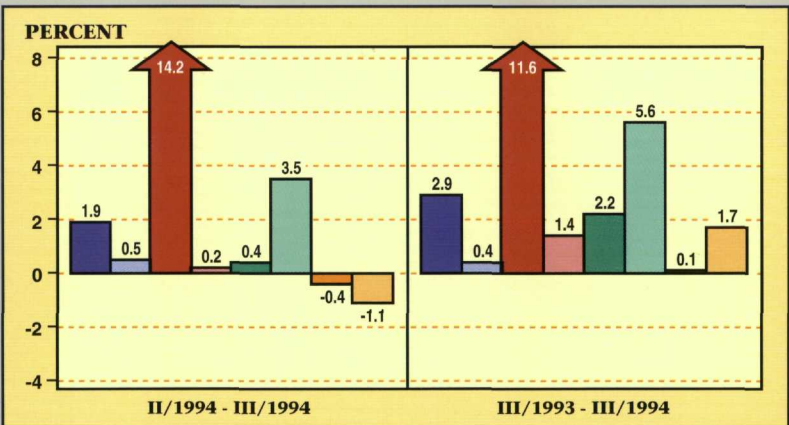
## Mississippi

	III/1994	II/1994	III/1993
Labor force (in thousands)	1,249.8	1,239.0	1,215.8
Total nonagricultural employment (in thousands)	1,056.3	1,019.4	1,016.8
Unemployment rate	6.1%	7.0%	6.2%
	II/1994	I/1994	II/1993
Real personal income* (in billions)	\$28.4	\$28.2	\$26.7



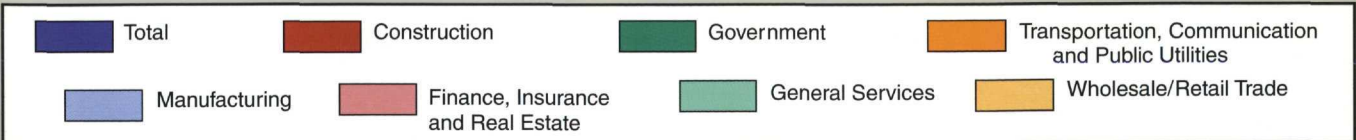
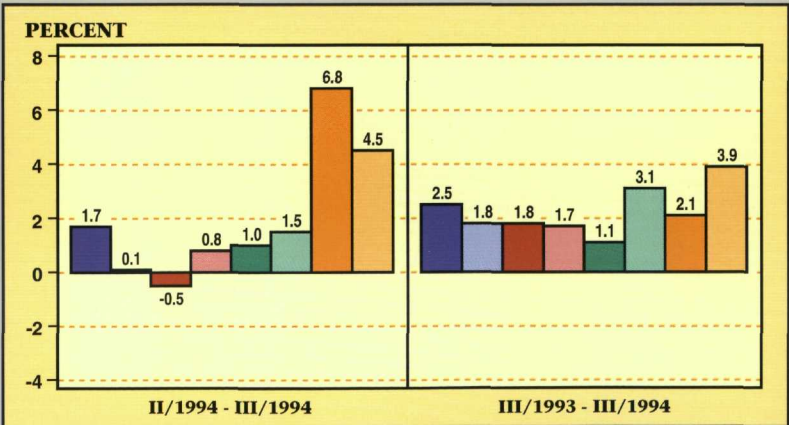
## Missouri

	III/1994	II/1994	III/1993
Labor force (in thousands)	2,682.5	2,652.2	2,648.4
Total nonagricultural employment (in thousands)	2,470.5	2,459.1	2,401.3
Unemployment rate	4.4%	4.9%	6.5%
	II/1994	I/1994	II/1993
Real personal income* (in billions)	\$73.4	\$72.5	\$71.1



## Tennessee

	III/1994	II/1994	III/1993
Labor force (in thousands)	2,625.3	2,638.6	2,508.9
Total nonagricultural employment (in thousands)	2,396.6	2,386.3	2,337.5
Unemployment rate	4.7%	4.6%	5.7%
	II/1994	I/1994	II/1993
Real personal income* (in billions)	\$67.4	\$66.9	\$64.5



NOTE: All data are seasonally adjusted. The nonagricultural employment data reflect the 1993 benchmark revision.  
\* Annual rate. Data deflated by CPI, 1982-84=100.