

# District Data

Selected economic indicators of banking,  
agricultural and business conditions in  
the Eighth Federal Reserve District

The Regional Economist  
January 1994

## Commercial Bank Performance Ratios

U.S., District and State

	All U.S.	U.S. <\$15B <sup>1</sup>	District	AR	IL	IN	KY	MS	MO	TN
<b>Return on Average Assets (Annualized)</b>										
3rd quarter 1993	1.22%	1.26%	1.27%	1.41%	1.44%	1.20%	1.10%	1.38%	1.21%	1.32%
2nd quarter 1993	1.20	1.24	1.28	1.43	1.49	1.27	1.05	1.41	1.20	1.35
3rd quarter 1992	0.94	1.06	1.17	1.39	1.21	1.06	1.07	1.25	1.11	1.16
<b>Return on Average Equity (Annualized)</b>										
3rd quarter 1993	15.79%	15.12%	14.99%	15.62%	15.28%	12.83%	12.98%	15.09%	15.27%	17.28%
2nd quarter 1993	15.56	14.88	15.13	15.98	16.00	13.71	12.40	15.42	15.13	17.91
3rd quarter 1992	13.37	13.58	14.39	16.09	13.58	12.02	13.29	13.86	14.41	16.11
<b>Net Interest Margin (Annualized)</b>										
3rd quarter 1993	4.50%	4.85%	4.53%	4.55%	4.89%	4.47%	4.33%	4.97%	4.38%	4.66%
2nd quarter 1993	4.50	4.85	4.56	4.57	4.94	4.49	4.32	4.96	4.40	4.72
3rd quarter 1992	4.47	4.81	4.47	4.60	4.60	4.61	4.22	5.06	4.27	4.67
<b>Nonperforming Loans<sup>2</sup> ÷ Total Loans</b>										
3rd quarter 1993	2.40%	1.89%	0.99%	0.91%	1.24%	0.61%	1.04%	0.86%	0.97%	1.05%
2nd quarter 1993	2.63	1.98	1.07	0.93	1.24	0.77	1.16	1.01	1.11	1.04
3rd quarter 1992	3.43	2.60	1.43	1.27	1.74	1.06	1.39	1.34	1.53	1.45
<b>Net Loan Losses ÷ Average Total Loans (Annualized)</b>										
3rd quarter 1993	0.80%	0.70%	0.35%	0.12%	0.39%	0.16%	0.45%	0.35%	0.35%	0.47%
2nd quarter 1993	0.84	0.72	0.39	0.13	0.41	0.21	0.46	0.38	0.46	0.50
3rd quarter 1992	1.22	1.02	0.56	0.34	0.75	0.52	0.67	0.50	0.45	0.81
<b>Loan Loss Reserve ÷ Total Loans</b>										
3rd quarter 1993	2.54%	2.29%	1.80%	1.58%	1.83%	1.49%	1.70%	1.69%	1.95%	2.04%
2nd quarter 1993	2.58	2.34	1.81	1.62	1.82	1.50	1.74	1.73	1.93	2.06
3rd quarter 1992	2.69	2.44	1.80	1.62	1.81	1.41	1.73	1.69	1.94	2.09

NOTE: Data include only that portion of the state within Eighth District boundaries.

<sup>1</sup> U.S. banks with average assets of less than \$15 billion are shown separately to make comparisons with District banks more meaningful, as there are no District banks with average assets greater than \$15 billion.

<sup>2</sup> Includes loans 90 days or more past due and nonaccrual loans

SOURCE: FFIEC Reports of Condition and Income for Insured Commercial Banks



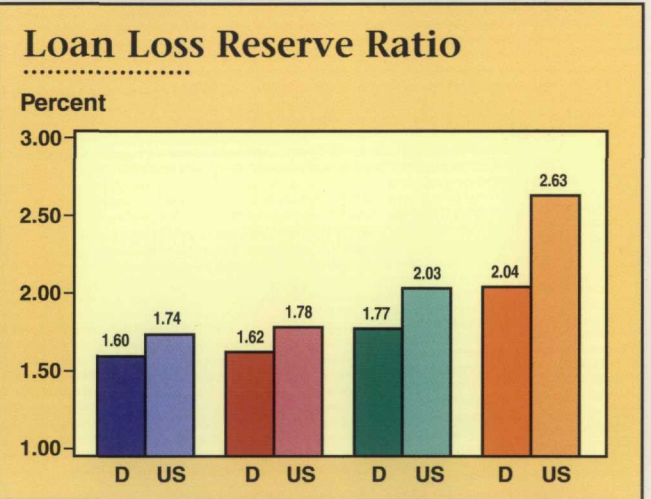
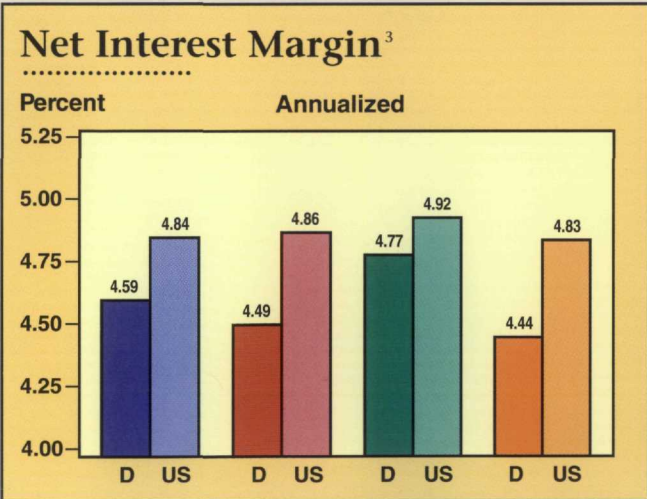
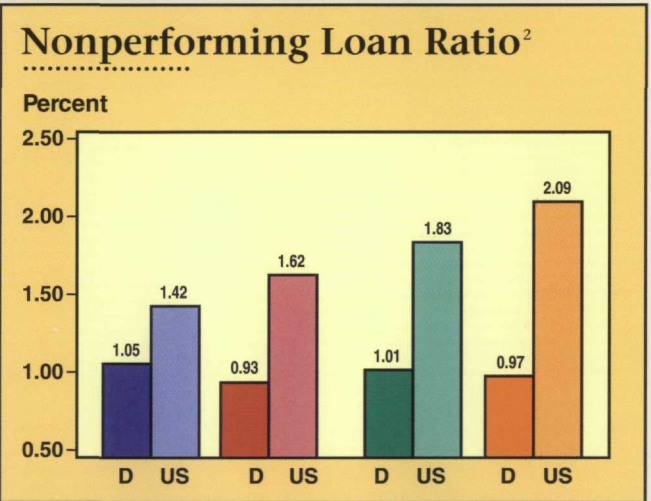
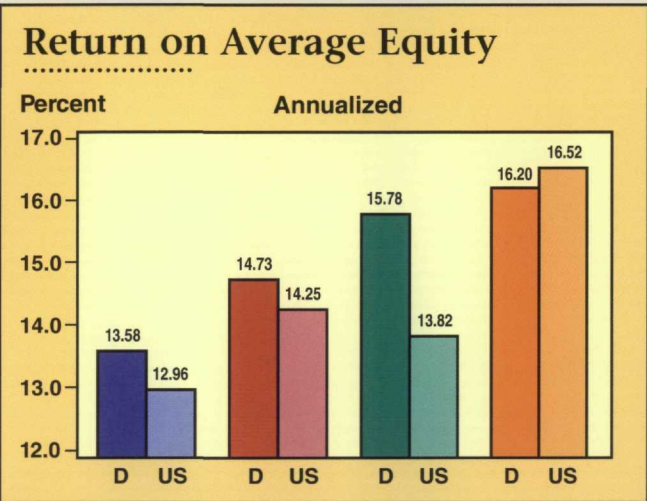
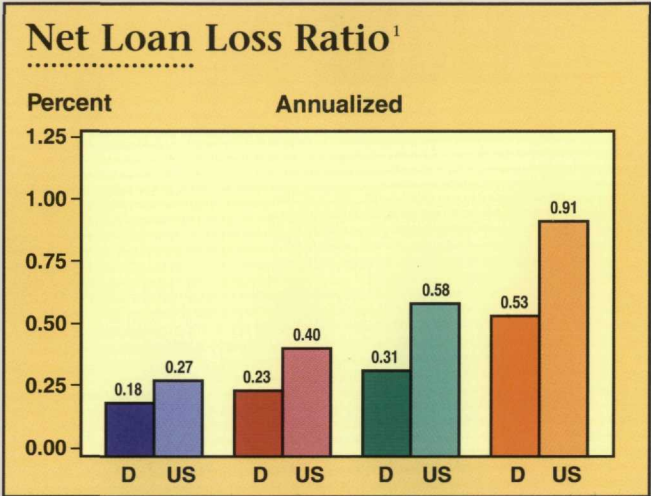
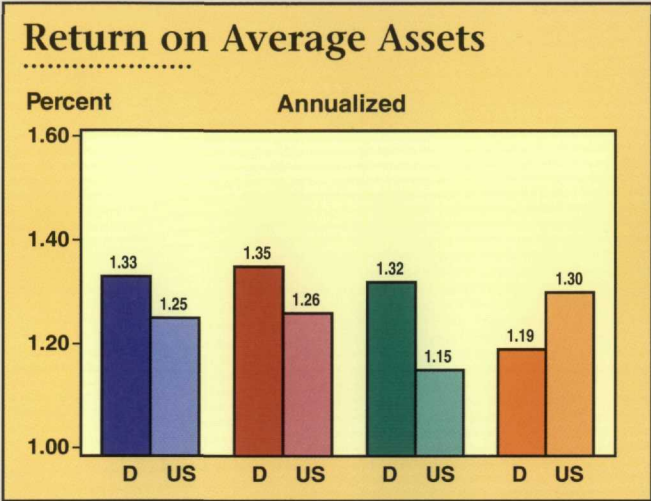
# Commercial Bank Performance Ratios

by Asset Size

3rd Quarter 1993

## Earnings

## Asset Quality



**D = District**  
**US = United States**

**< \$100 Million**

**\$100 Million - \$300 Million**

**\$300 Million - \$1 Billion**

**\$1 Billion - \$15 Billion**

NOTE: Asset quality ratios are calculated as a percent of total loans.

<sup>1</sup> Loan losses are adjusted for recoveries

<sup>2</sup> Includes loans 90 days or more past due and nonaccrual loans

<sup>3</sup> Interest income less interest expense as a percent of average earning assets

SOURCE: FFIEC Reports of Condition and Income for Insured Commercial Banks



Agricultural Bank Performance Ratios

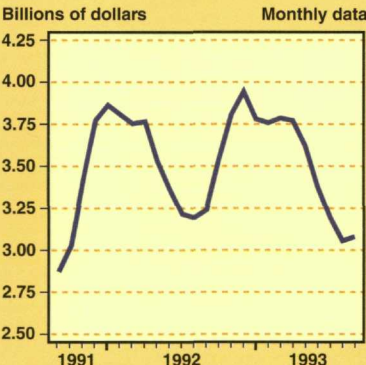
	U.S.	AR	IL	IN	KY	MS	MO	TN
Return on average assets (annualized)								
3rd quarter 1993	1.35%	1.36%	1.30%	1.25%	1.34%	1.63%	1.42%	1.27%
2nd quarter 1993	1.36	1.38	1.33	1.26	1.36	1.53	1.47	1.31
3rd quarter 1992	1.32	1.49	1.17	1.21	1.33	1.51	1.34	1.22
Return on average equity (annualized)								
3rd quarter 1993	13.64%	13.09%	12.70%	12.82%	13.98%	16.41%	14.65%	12.78%
2nd quarter 1993	13.91	13.19	13.03	13.12	14.33	15.22	15.40	13.39
3rd quarter 1992	13.82	14.76	12.06	12.38	14.14	16.07	14.40	13.27
Net interest margin (annualized)								
3rd quarter 1993	4.62%	4.41%	4.23%	4.79%	4.49%	5.19%	4.63%	4.66%
2nd quarter 1993	4.61	4.40	4.25	4.89	4.44	5.19	4.63	4.64
3rd quarter 1992	4.64	4.63	4.25	4.66	4.54	5.15	4.62	4.66
Ag loan losses ÷ average ag loans (annualized)								
3rd quarter 1993	0.15%	0.41%	0.13%	0.46%	0.15%	0.79%	0.36%	-0.06%
2nd quarter 1993	0.16	0.34	0.18	0.48	0.12	1.11	0.56	3.06
3rd quarter 1992	0.28	0.43	0.26	0.12	0.30	1.08	0.54	0.57
Ag nonperforming loans <sup>1</sup> ÷ total ag loans								
3rd quarter 1993	1.54%	0.74%	1.98%	1.36%	1.44%	2.44%	1.02%	0.12%
2nd quarter 1993	1.73	0.81	1.80	1.73	1.91	3.99	1.20	0.68
3rd quarter 1992	1.87	1.10	3.34	2.69	2.00	3.46	2.07	0.72

NOTE: Agricultural banks are defined as those banks with a greater than average share of agricultural loans to total loans.  
Data include only that portion of the state within Eighth District boundaries.

<sup>1</sup> Includes loans 90 days or more past due and nonaccrual loans

SOURCE: FFIEC Reports of Condition and Income for Insured Commercial Banks

U.S. Agricultural Exports\*



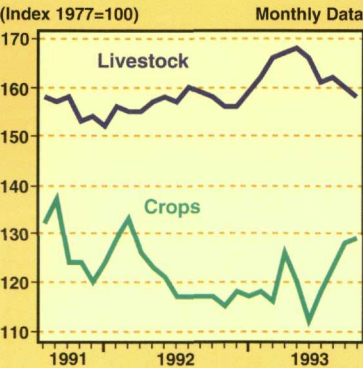
U.S. Agricultural Exports by Commodity

Dollar amounts in billions

Commodity	July	Aug	Sep	Year-to-date	Change from year ago
Livestock & products	.62	.62	.64	7.57	-7.3%
Corn	.23	.26	.38	4.25	-7.7
Cotton	.11	.09	.08	1.54	-29.9
Rice	.05	.07	.07	0.77	1.3
Soybeans	.28	.17	.21	4.61	6.7
Tobacco	.09	.07	.06	1.44	-8.0
Wheat	.37	.33	.36	4.74	9.6
TOTAL <sup>1</sup>	3.08	2.95	3.22	42.59	0.4

<sup>1</sup> Includes commodities not listed here

U.S. Crop and Livestock Prices



Indexes of Food and Agricultural Prices

	Level			Growth <sup>1</sup>	
	III/93	II/93	III/92	II/93-III/93	III/92-III/93
Prices received by U.S. farmers	142	143	138	-2.76	3.14
Prices received by District farmers <sup>2</sup>					
Arkansas	123	121	121	6.80	1.10
Illinois <sup>3</sup>	102	100	99	11.14	3.72
Indiana	114	110	108	15.36	5.88
Missouri	141	138	136	6.92	3.69
Tennessee	145	143	141	5.70	2.83
Prices paid by U.S. farmers					
Production items	178	179	177	-2.22	0.56
Other items <sup>4</sup>	197	197	192	0.00	2.60
Consumer food prices	141	141	138	0.09	2.05
Consumer nonfood prices	146	145	141	2.04	2.92

NOTE: Data not seasonally adjusted except for consumer food prices and nonfood prices.

<sup>1</sup> Compounded annual rates of change are computed from unrounded data.

<sup>2</sup> Index of prices received for all farm products (1977=100). Indexes for Kentucky and Mississippi are unavailable.

<sup>3</sup> (1985-89=100) for 1991; (1986-90=100) for 1992

<sup>4</sup> Other items include commodities, services, interest, taxes and wages.

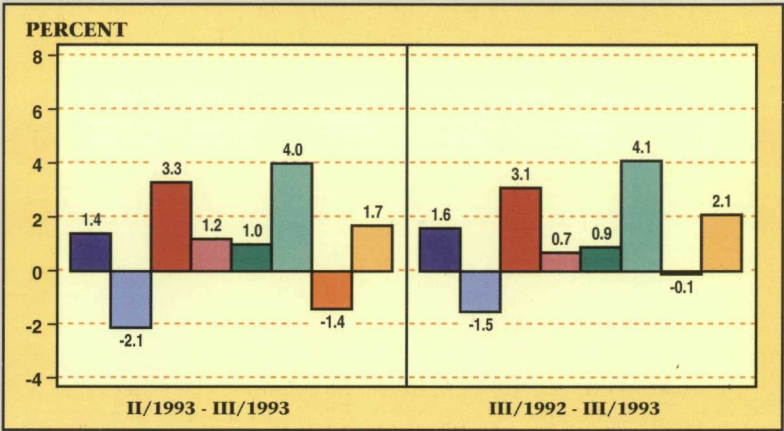


# Selected U.S. and State Business Indicators

## United States

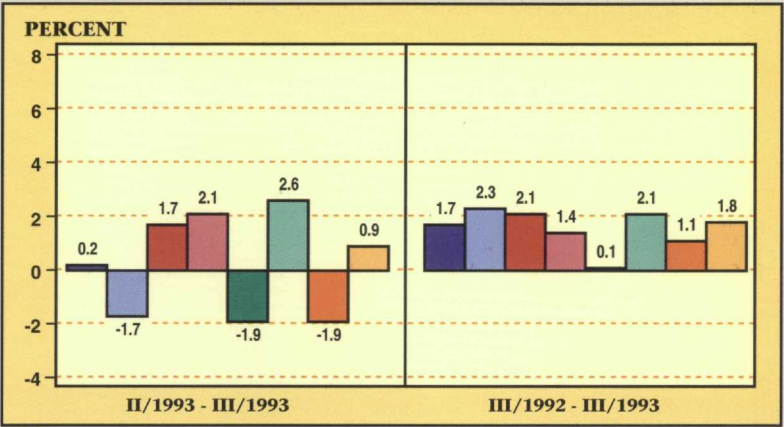
	III/1993	II/1993	III/1992
Labor force (in thousands)	128,138	127,866	127,343
Total nonagricultural employment (in thousands)	110,382	109,993	108,631
Unemployment rate	6.7%	7.0%	7.6%
	II/1993	I/1993	II/1992
Real personal income* (in billions)	\$3,714.5	\$3,657.6	\$3,630.8

Compounded Annual Rates of Change in  
Nonagricultural Employment



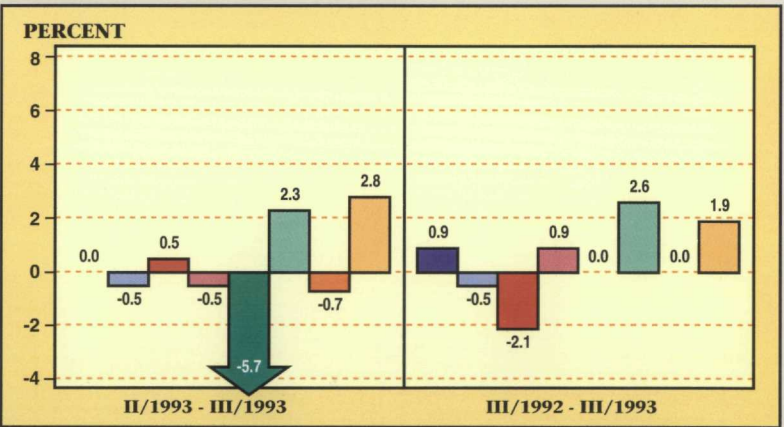
## Arkansas

	III/1993	II/1993	III/1992
Labor force (in thousands)	1,175.3	1,153.2	1,151.9
Total nonagricultural employment (in thousands)	980.5	980.0	964.4
Unemployment rate	5.9%	6.0%	7.1%
	II/1993	I/1993	II/1992
Real personal income* (in billions)	\$27.6	\$27.5	\$26.9



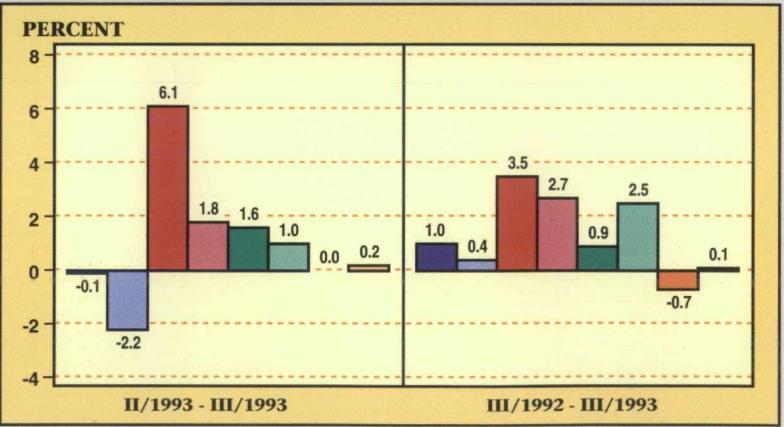
## Illinois

	III/1993	II/1993	III/1992
Labor force (in thousands)	6,117.4	6,132.5	6,092.1
Total nonagricultural employment (in thousands)	5,228.2	5,227.9	5,179.4
Unemployment rate	7.7%	8.3%	7.3%
	II/1993	I/1993	II/1992
Real personal income* (in billions)	\$184.7	\$182.8	\$180.7



## Indiana

	III/1993	II/1993	III/1992
Labor force (in thousands)	2,999.2	2,897.3	2,881.8
Total nonagricultural employment (in thousands)	2,560.8	2,561.5	2,535.5
Unemployment rate	4.4%	6.0%	6.7%
	II/1993	I/1993	II/1992
Real personal income* (in billions)	\$75.9	\$75.4	\$73.7



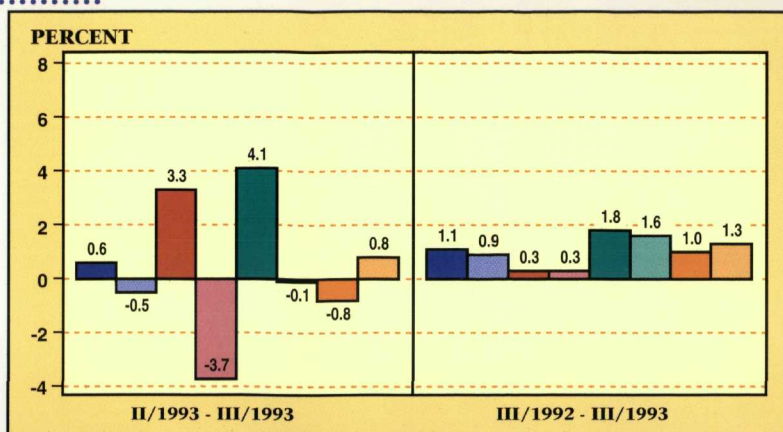


## Kentucky

	III/1993	II/1993	III/1992
Labor force (in thousands)	1,774.5	1,770.7	1,754.7
Total nonagricultural employment (in thousands)	1,529.7	1,527.3	1,513.5
Unemployment rate	6.7%	6.7%	7.3%

	II/1993	I/1993	II/1992
Real personal income* (in billions)	\$45.6	\$45.2	\$44.8

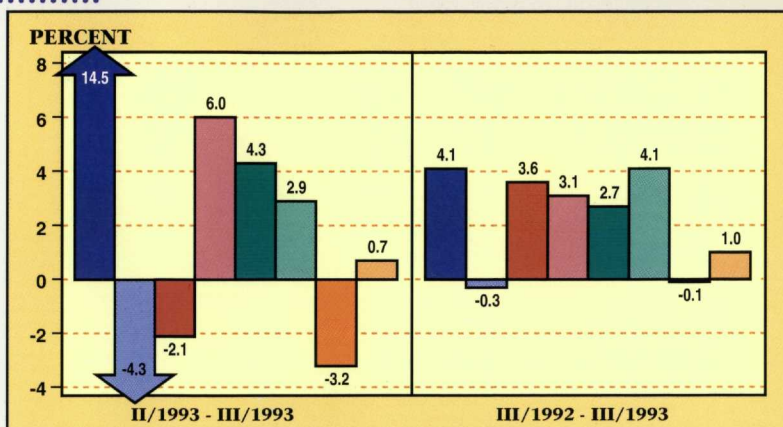


## Mississippi

	III/1993	II/1993	III/1992
Labor force (in thousands)	1,200.6	1,196.8	1,198.0
Total nonagricultural employment (in thousands)	1,035.2	1,000.6	994.5
Unemployment rate	5.7%	7.1%	8.6%

	II/1993	I/1993	II/1992
Real personal income* (in billions)	\$27.1	\$27.1	\$26.2

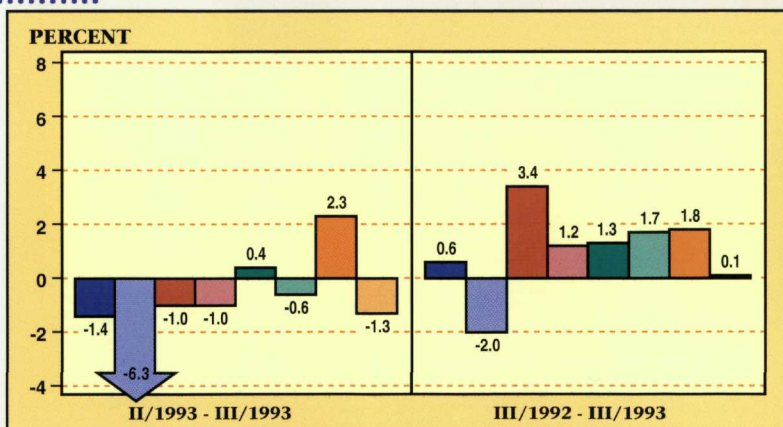


## Missouri

	III/1993	II/1993	III/1992
Labor force (in thousands)	2,699.1	2,632.8	2,684.4
Total nonagricultural employment (in thousands)	2,333.1	2,341.2	2,318.4
Unemployment rate	5.9%	6.6%	5.9%

	II/1993	I/1993	II/1992
Real personal income* (in billions)	\$71.2	\$70.4	\$70.2

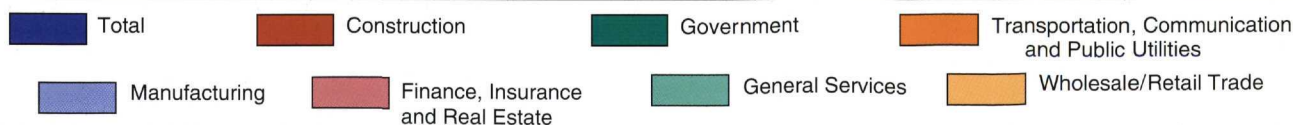
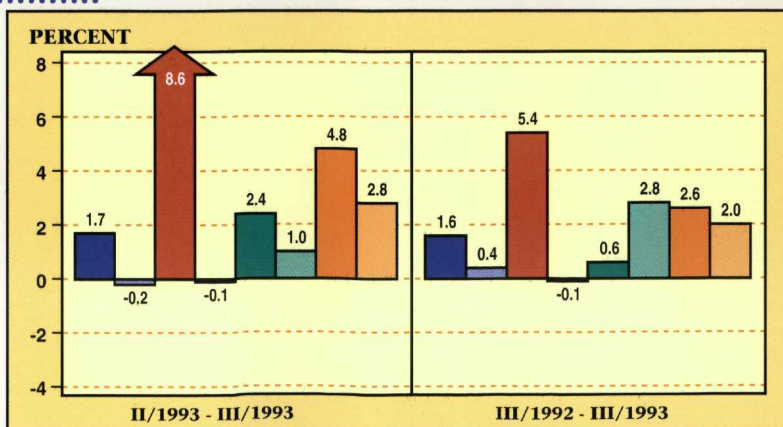


## Tennessee

	III/1993	II/1993	III/1992
Labor force (in thousands)	2,479.4	2,448.2	2,448.1
Total nonagricultural employment (in thousands)	2,273.0	2,263.4	2,236.2
Unemployment rate	5.6%	6.3%	6.4%

	II/1993	I/1993	II/1992
Real personal income* (in billions)	\$65.1	\$63.9	\$62.6



NOTE: All data are seasonally adjusted. The nonagricultural employment data reflect the 1992 benchmark revision.  
\* Annual rate. Data deflated by CPI, 1982-84=100.